

-BUILDING DISPLAY STAND

•Take bottom piece and set onto ground, insert the back piece hooks into the slots on the bottom piece and push down to secure (see Figure 1 & 2).

•Using the provided 3/8" bolts, hand thread through the display mounting tabs and tighten with a 9/16" wrench to fasten.

•Attach literature holder by peeling 3M tap and attaching it to the display sign in the blank-empty top area (see Figure 3).

•Take Gooseneck Surge hitch and guide it onto the assembled display, secure using the provided pin.

NOTE: The bottom pin hole on the display stand is used on standard (red) frames & the top pin hole is used on offset (black) frames (see Figures 4 & 5).

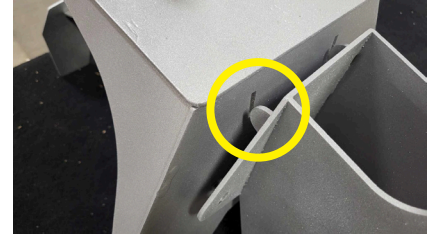


Figure 1: Line up back piece hooks with bottom piece.



Figure 2: Slide hooks into bottom piece and push down to secure.

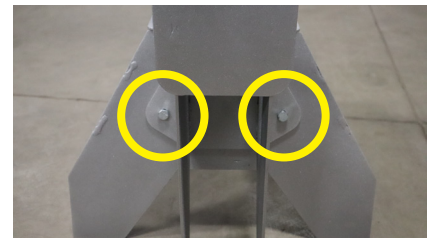


Figure 3: Fasten using provided bolts through display mounting tabs.



Figure 4: For standard models, use the bottom pin hole.



Figure 5: For offset models, use the top pin hole.